

GOVERNANCE

STRUCTURAL OVERVIEW



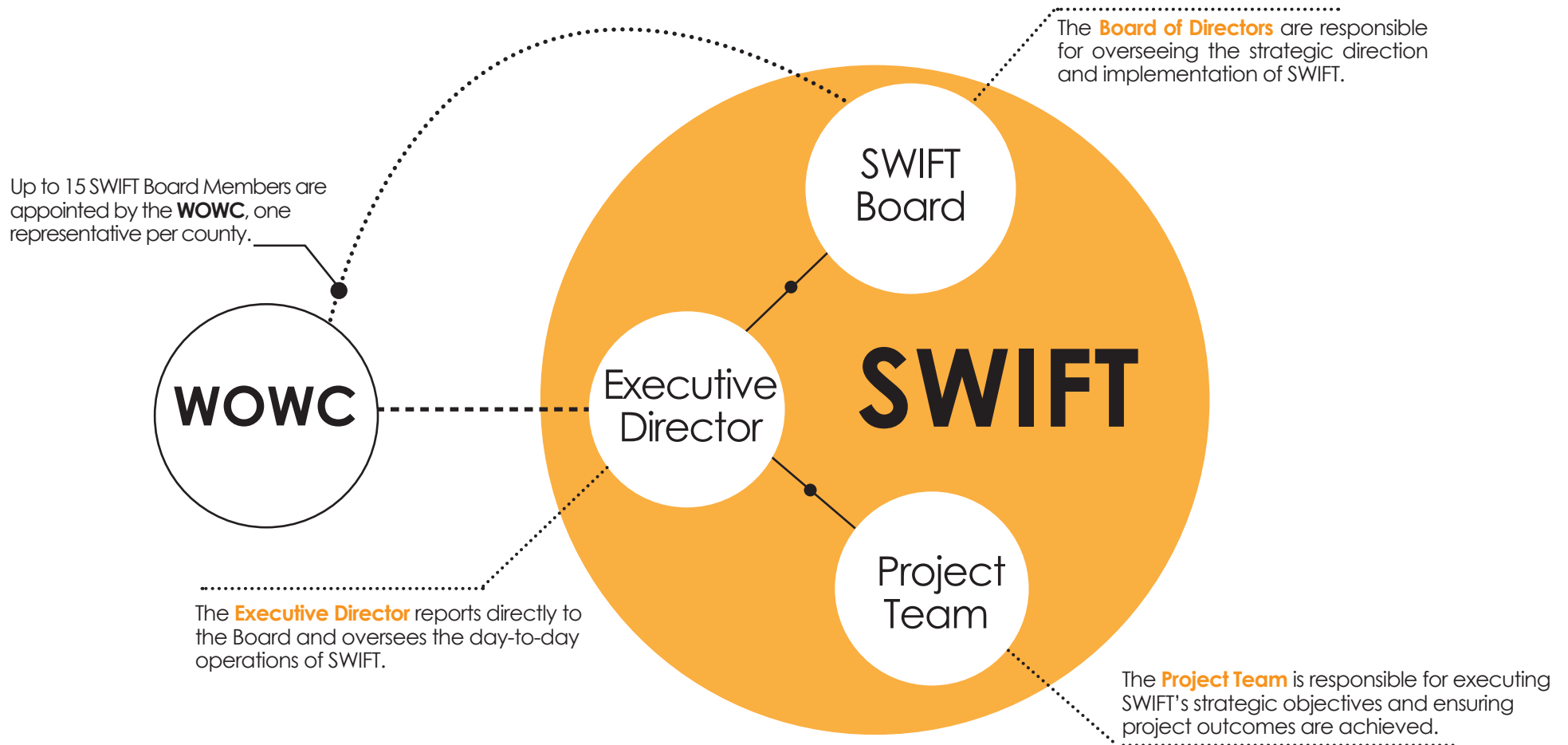


About Us

Southwestern Integrated Fibre Technology (SWIFT) is a non-profit regional broadband project initiated by the Western Ontario Wardens' Caucus (WOWC), and supported by the federal and provincial governments, to improve high-speed connectivity across Southwestern Ontario.

SWIFT's governance model ensures that public-private investments are effectively utilized to maximize the expansion of broadband infrastructure to increase network coverage in underserved areas within the region, particularly in rural communities.

Overview



Western Ontario Wardens' Caucus

Representing the combined interests of 15 upper and single tier municipalities across Southwestern Ontario, **WOWC** addresses the region's connectivity challenges via the SWIFT Board of Directors with a majority representation.

- Up to 15 SWIFT Board Members are appointed by the WOWC, one representative per county.
- Receives regular operational and financial updates directly from SWIFT's Executive Director.
- Continues to advocate for sustainable long-term regional broadband funding to support the expansion of high-speed connectivity.



SWIFT Members

SWIFT Members are municipal partners, namely, **WOWC Members and Contributing Members**, that have made capital contributions to support the expansion of broadband infrastructure across the region.

WOWC MEMBERS

- Brant County
- Bruce County
- Chatham-Kent
- Dufferin County
- Elgin County
- Essex County
- Grey County
- Huron County
- Lambton County
- Middlesex County
- Norfolk County
- Oxford County
- Perth County
- Simcoe County
- Wellington County

CONTRIBUTING MEMBERS

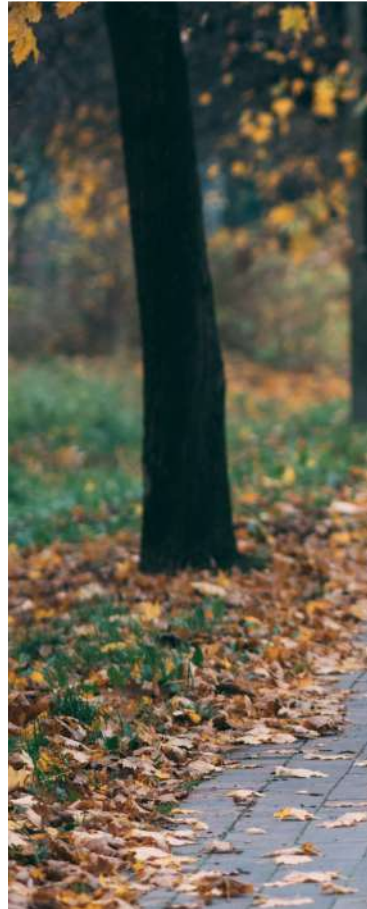
- City of London
- City of Windsor
- Niagara Region
- Region of Waterloo
- Town of Caledon



Board of Directors

Comprised of up to 15 WOWC Members and up to 5 Contributing Members, the **Boards of Directors** responsibilities include:

- Overseeing SWIFT's strategic direction, project implementation and financial viability.
- Hiring and evaluating the Executive Director.
- Overseeing and directing the Executive Director of the organization in key decisions.





Executive Director

The **Executive Director** is responsible for the leadership and management oversight of SWIFT, including operational decisions.

- Reports directly to SWIFT's Board of Directors.
- Oversees day-to-day operations of SWIFT.
- Oversees and directs Project Team in managing organizational risks and achieving strategic objectives.
- Provides regular operational and financial updates to WOWC.
- Interfaces with upper tier governments contributing to the project.

Project Team

— The **Project Team** is the principal day-to-day interface with all stakeholders of SWIFT led by the Executive Director.

- Reports directly to Executive Director.
- Responsible for executing SWIFT's strategic objectives and ensuring project outcomes are achieved.
- Ensures that implementations timelines are adhered to and communicates operational progress.
- Ensures tendering process is conducted in an open, fair and transparent competitive manner that provides the best value for public investment.
- Responsible for overseeing and negotiating contracts with private sector partners.
- Oversees network deployment to ensure service providers are meeting contractual obligations.
- Oversees and manages contribution agreements with the province to ensure funding is spent according to agreed upon conditions.







SWIFT

SouthWestern • Integrated • Fibre • Technology

www.swiftruralbroadband.ca